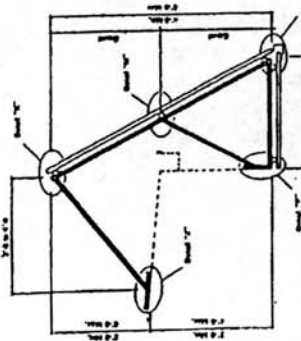


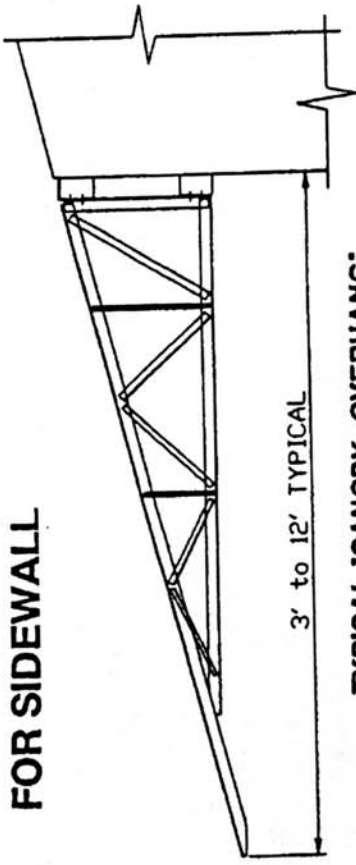
What Have You Got for Overhang and for Mansard?



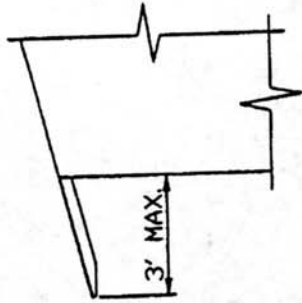
SIMPLE SLOPED

FOR MANSARD

FOR SIDEWALL

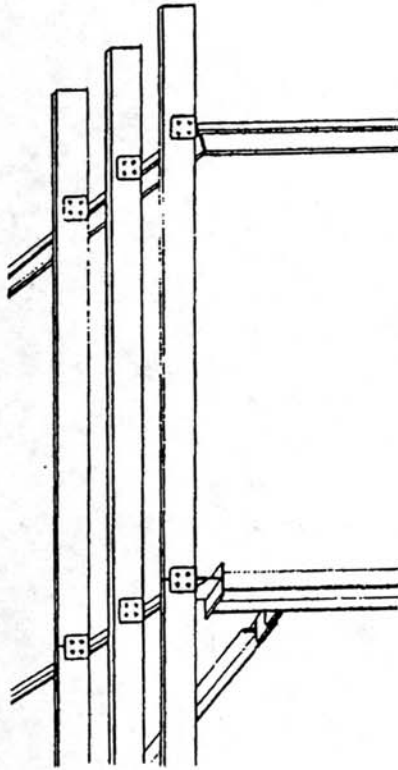


TYPICAL CANOPY-OVERHANG

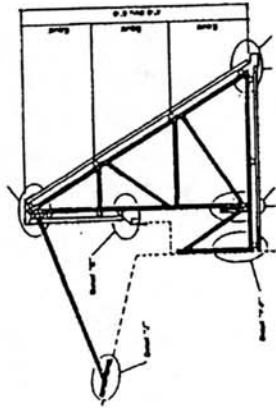


TOP CHORD EXTENSION

FOR ENDWALL

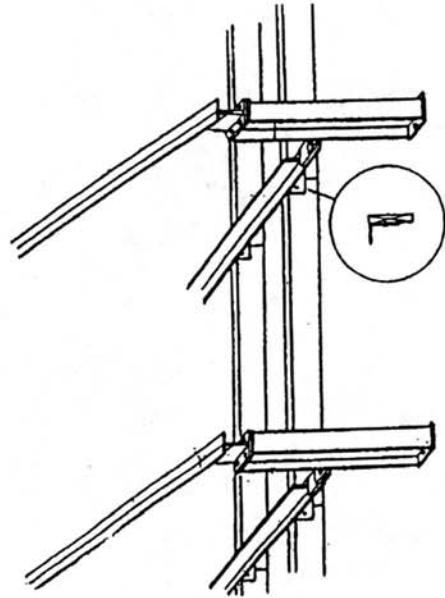


1' TO 7'
ROOF PURLIN
EXTENSIONS



EXTENDED SLOPED

FOR CEILING (CLIPS)



Every 16" - 24" - 36" O.C.